

Notes for Figure 6H-32—Typical Application 32
Half Road Closure on a Multi-Lane, High-Speed Highway

Standard:

- 1. Pavement markings no longer applicable shall be removed or obliterated as soon as practical. Except for intermediate-term and short-term situations, temporary markings shall be provided to clearly delineate the temporary travel path. For short-term and intermediate-term situations where it is not feasible to remove and restore pavement markings, channelization shall be made dominant by using a very close device spacing.**

Guidance:

- 2. When paved shoulders having a width of 8 feet or more are closed, channelizing devices should be used to close the shoulder in advance of the merging taper to direct vehicular traffic to remain within the traveled way.*
- 3. Where channelizing devices are used instead of pavement markings, the maximum spacing should be $1/2 S$ feet where S is the speed in mph.*
- 4. If the tangent distance along the temporary diversion is less than 600 feet, a Double Reverse Curve sign should be used instead of the first Reverse Curve sign, and the second Reverse Curve sign should be omitted.*

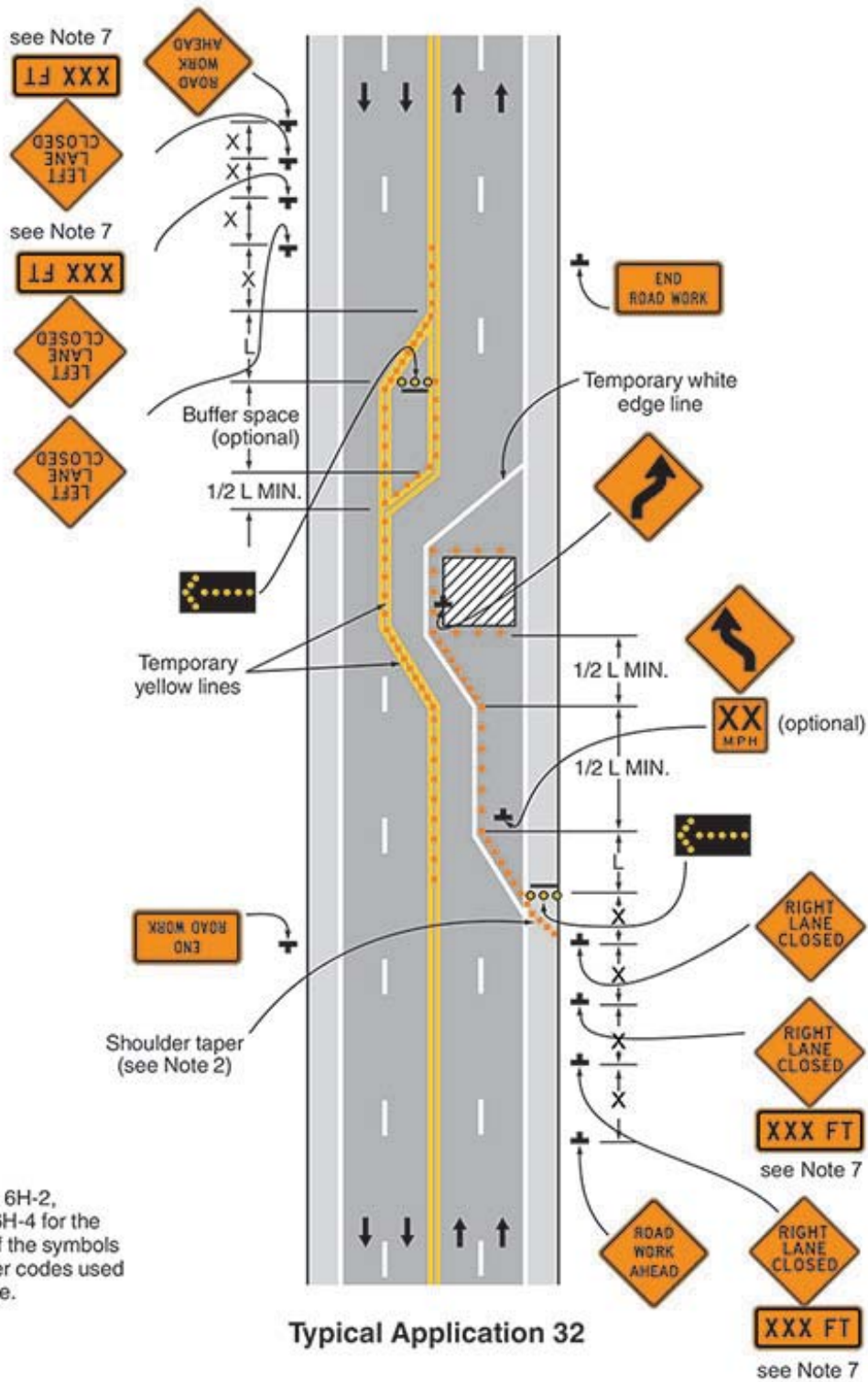
Option:

5. Warning lights may be used to supplement channelizing devices at night.
6. A truck-mounted attenuator may be used on the work vehicle and/or the shadow vehicle.
7. For Short-Term applications, when post mounted signs are not used, the distance legend may be shown on the sign face rather than on a supplemental plaque.

Guidance:

- 8. A buffer space should be used between opposing directions of vehicular traffic as shown in this application.*

Figure 6H-32. Half Road Closure on a Multi-Lane, High-Speed Highway (TA-32)



Note: See Tables 6H-2, 6H-3 and 6H-4 for the meaning of the symbols and/or letter codes used in this figure.